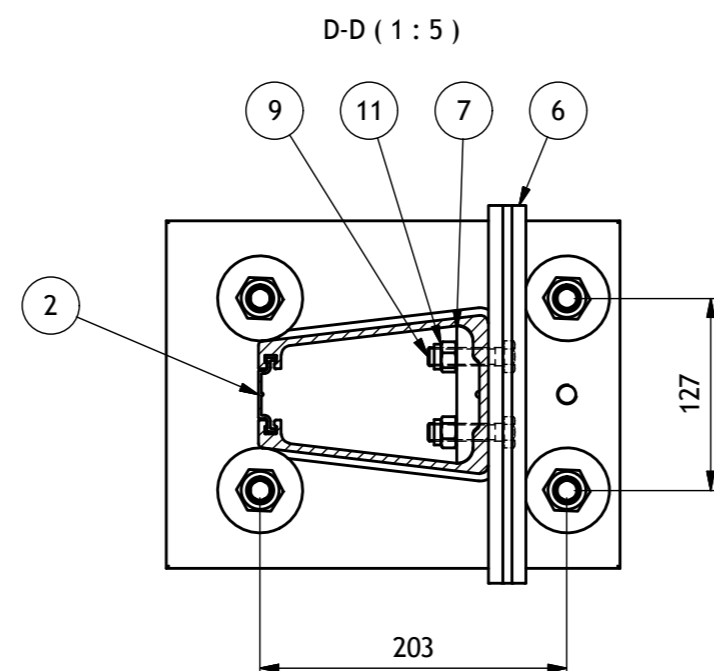
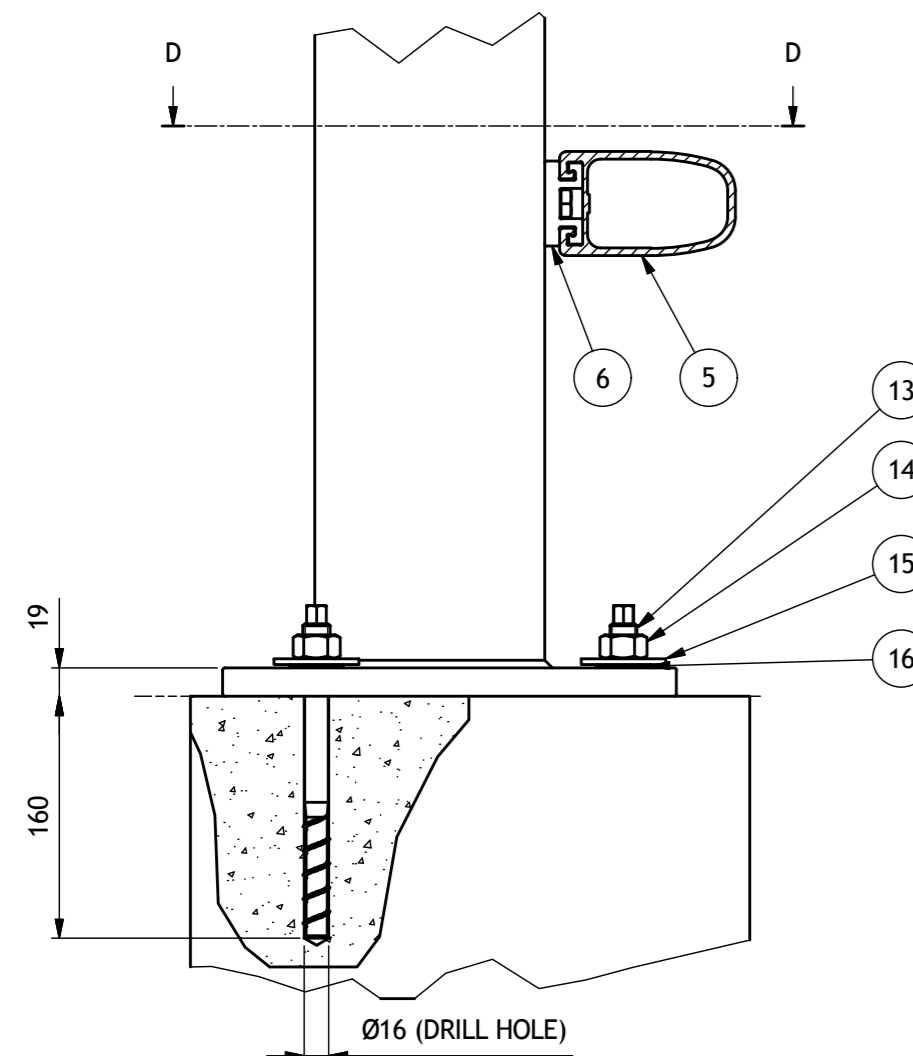
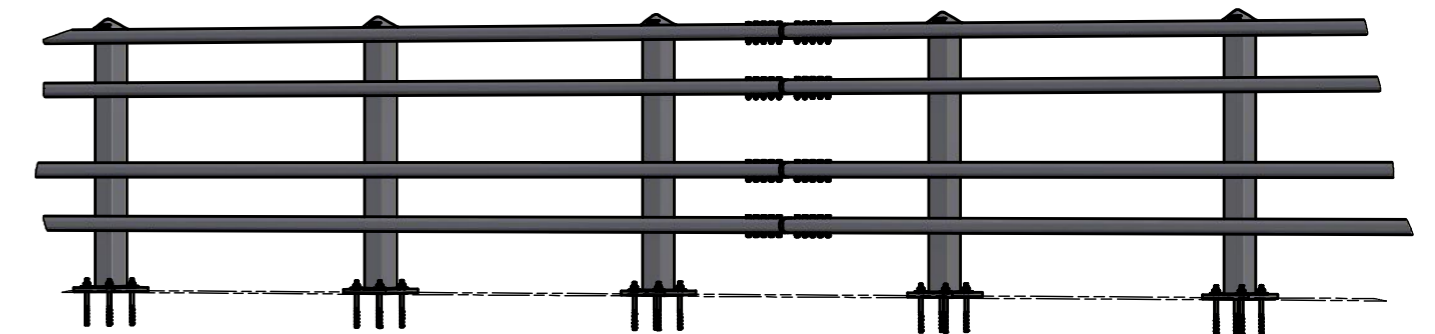


PERSPECTIVE VIEW



OBEX "LINE" BRIDGE PARAPET PERFORMANCE	
DESCRIPTION	VALUE
CERTIFICATE NUMBER	CE 433/2131/CPR/2014
Product configuration	OBEX LINE 1.5B 4R - 1,25 m
Performance level	H2
Working Width	W4
Vehicle intrusion	VI 3
Dynamic deflection	1,2 m
ASI	B

INSTALLATION	
COMPONENT	TORQUE [Nm]
ANCHOR BOLTS	50 ±5
RAIL JOINTS	40 ±5
RAIL TO POST	50 ±5

ALL BOLTS AND NUTS TO BE STAINLESS STEEL TO GRADE A2/A4 CLASS 70 min. TO CURRENT BS/EN STANDARDS.

ITEM	DRW N°	REV	CODE	DESCRIPTION	MATERIAL
16			33.00184	NYLON TOP HAT	NYLON
15			23.00169	WASHER ISO 7093-1 - 18 - 300 HV	300 HV
14			22.00168	HEX. NUT ISO 4032 - M18 - 10	10
13			25.00163	TSM B16x220 M18x45 SW13	10.9
12			23.00177	WASHER ISO 7089 - 12 - 200 HV - A2	A2
11			22.00143	NYLOC NUT ISO 7040 - M12 - A2-70	A2-70
10			21.00165	HH SCREW ISO 4014 - M12 x 90 - A2-70	A2-70
9			21.00141	HH SCREW ISO 4017 - M12 x 50 - A2-70	A2-70
8	3		13.00003	TRAFFIC RAIL INNER JOINT	EN AW 6082 T6
7	6		10.00006	POST NUT BAR	EN AW 6082 T6
6	4		10.00004	POST SPACER L=250 mm	EN AW 6082 T6
5	13		12.00013	TRAFFIC RAIL TYPE 1	EN AW 6082 T6
4	14		12.00014	TRAFFIC RAIL TYPE 2	EN AW 6082 T6
3	7		10.00007	POST CAP	EN AC 44100
2	11		10.00011	REAR COVER H=1221 mm	EN AW 6082 T6
1	18		11.00018	POST H=1231 mm + PLATE	EN AW 6082 T6

PARTS LIST		SCALE	FORMAT SHEET	PROJECT
DATE	28/04/2015	1:20	A2	00002.04
DRAWN	PASQUALETTO			
APPROVED	STEVANATO			
				CODE
				LINE
SAFETY BARRIER "LINE" 1.5B 4R 1,25H				DRAWING N°
				62